

1F-07-05-02



GEORGES

VANTONGERLOO

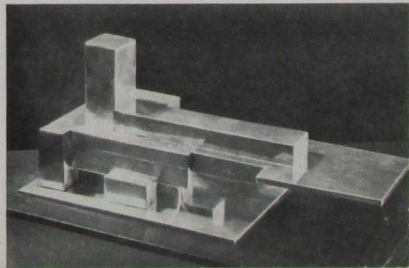
*Courtesy of
Hugo Van Tongerlo*

MUSEO DE ARTE MODERNO	
SECRETARIA DE CULTURA	
Municipalidad de la Ciudad de Buenos Aires	
Nº ORDEN	<i>Arch. Pirovano</i>
UBICACION	<i>Carr. Bélgica</i>

ROSE FRIED GALLERY

6 EAST 65 STREET • NEW YORK 21

April 14 to May 9, 1953 • 1:30 - 5:30



the subject

. Not only can beauty and art manifest themselves in various forms and aspects, but it must be borne in mind that there are many degrees (individual values) which vary according to the talent of the author. I propose only what I think, and you should do the same. Conception is in the singular. A follower merely repeats. Conceptions are infinite in character, and I merely set forth my own. p. 5

reflections vi

. Life, as an absolute value, even if it manifests itself in different aspects, does not evolve; it owes its eternity to a perpetual transformation. This transformation is only a constant repetition of life, in which no degree of evolution is perceptible. We may designate life as *one*. Since life does not evolve, it is only the *mode* of living that can evolve. That is to say only the means can evolve. p. 39

Vantongerloo: "Paintings, Sculptures, Reflections—Problems of Contemporary Art," Wittenborn Schultz, Inc., 1948.

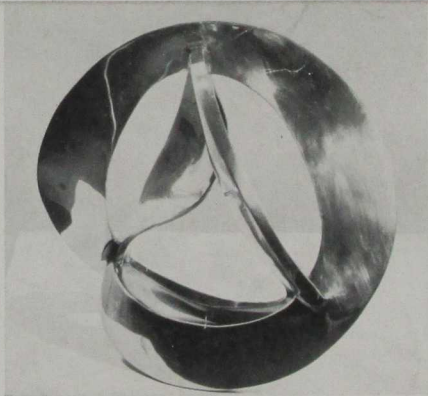
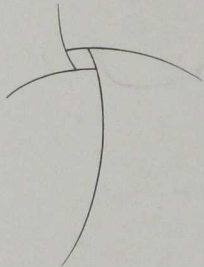
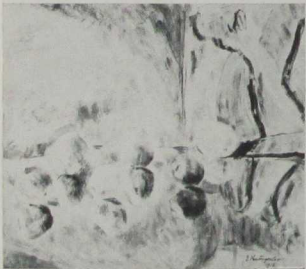
paintings

1. pommes 1916
oil on canvas 24 x 28"
2. portrait de l'auteur 1916
oil on canvas 39½ x 29"
3. femme 1916
oil on canvas 39½ x 29"
4. etude 1917
oil on board 20 x 20"
5. $y = -x^2 + 3x + 10$ 1934
oil on wood 43 x 30"
6. etendue ($s = r^2 \times \pi$) 1936
oil on wood 40 x 26"
7. etendue (Courbes Vertes) 1938
oil on wood 32¼ x 26"
8. formation de la matiere 1951
oil on masonite 16 x 19"

sculpture

9. rapport des volumes 1921
wood 17 x 6 x 6"
10. aeroport plus armature 1928
type a, serie a, silvered copper 6½ x 14¾ x 5¾"
11. aeroport (particulier) 1928
type a, serie b, silvered copper 11¾ x 5 x 5"
12. aeroport type b 1928
serie a, oxidized brass 3 x 14¾ x 8"
13. aerodrome souterrain 1931
(project) painted on wood 35½ x 27½"
14. plan et espace 1945
copper 7½ x 8 x 7¼"

color sketches, studies and photographs



Preview: april 13, 4 to 7 p.m.